

LIVING LEVEL NOTES:

HEAT PUMP 200 AMP SERVICE

INSULATION:

ATTIC R-30

EXT. WALL R-13

BASEMENT CEILING R-19

ATTIC VENTILATION WITH RIDGE

VENTS AND PERFORATED SOFTI

VENT

STAIRS

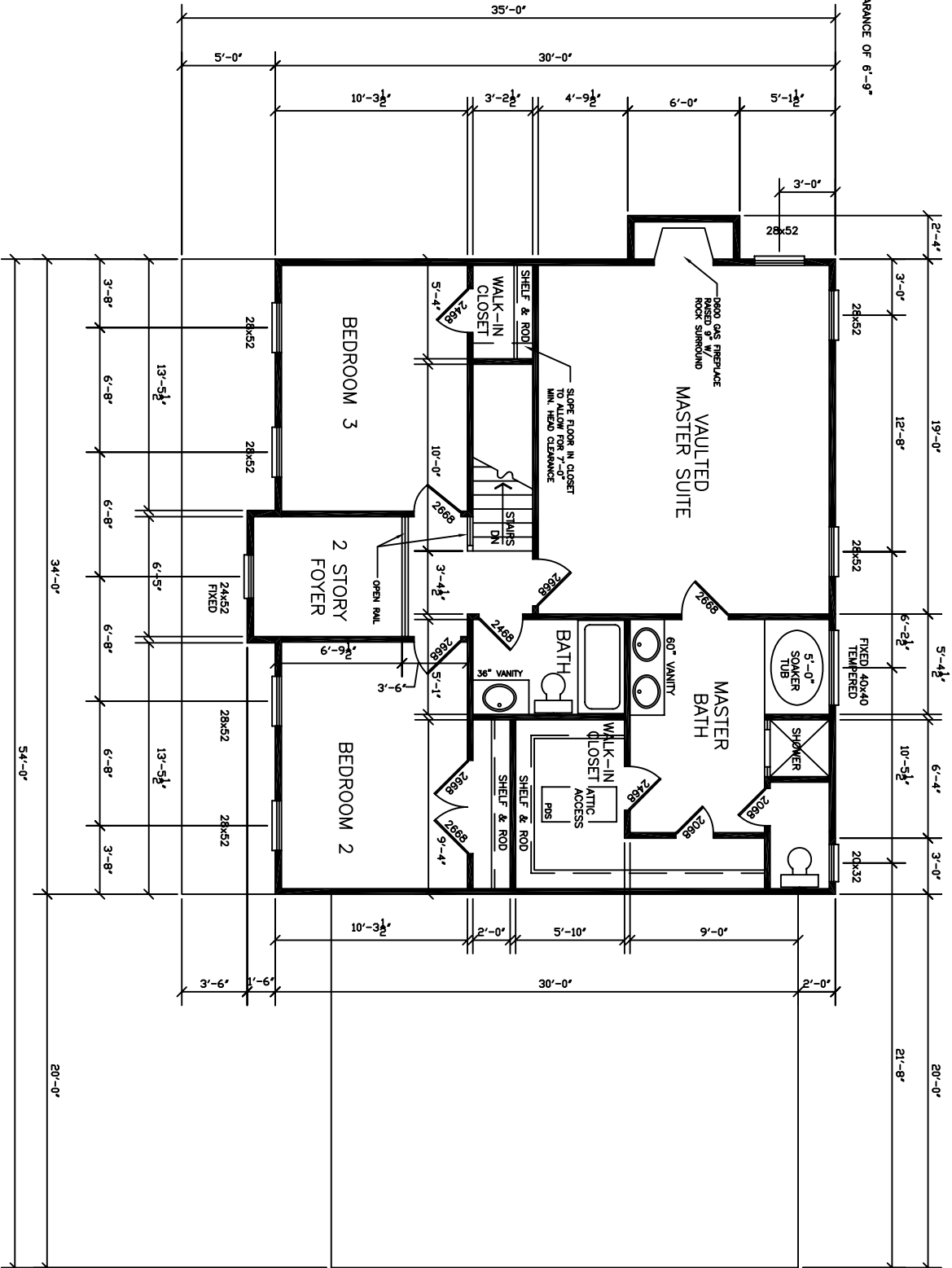
TREADS 10 1/2"

RISER 7 1/2"

WIDTH 36"

MAINTAIN HEAD CLEARANCE OF 6'-9"

HOUSE HEIGHT:
BASEMENT:
FIRST FLOOR:
SECOND FLOOR:



SECOND FLOOR PLAN