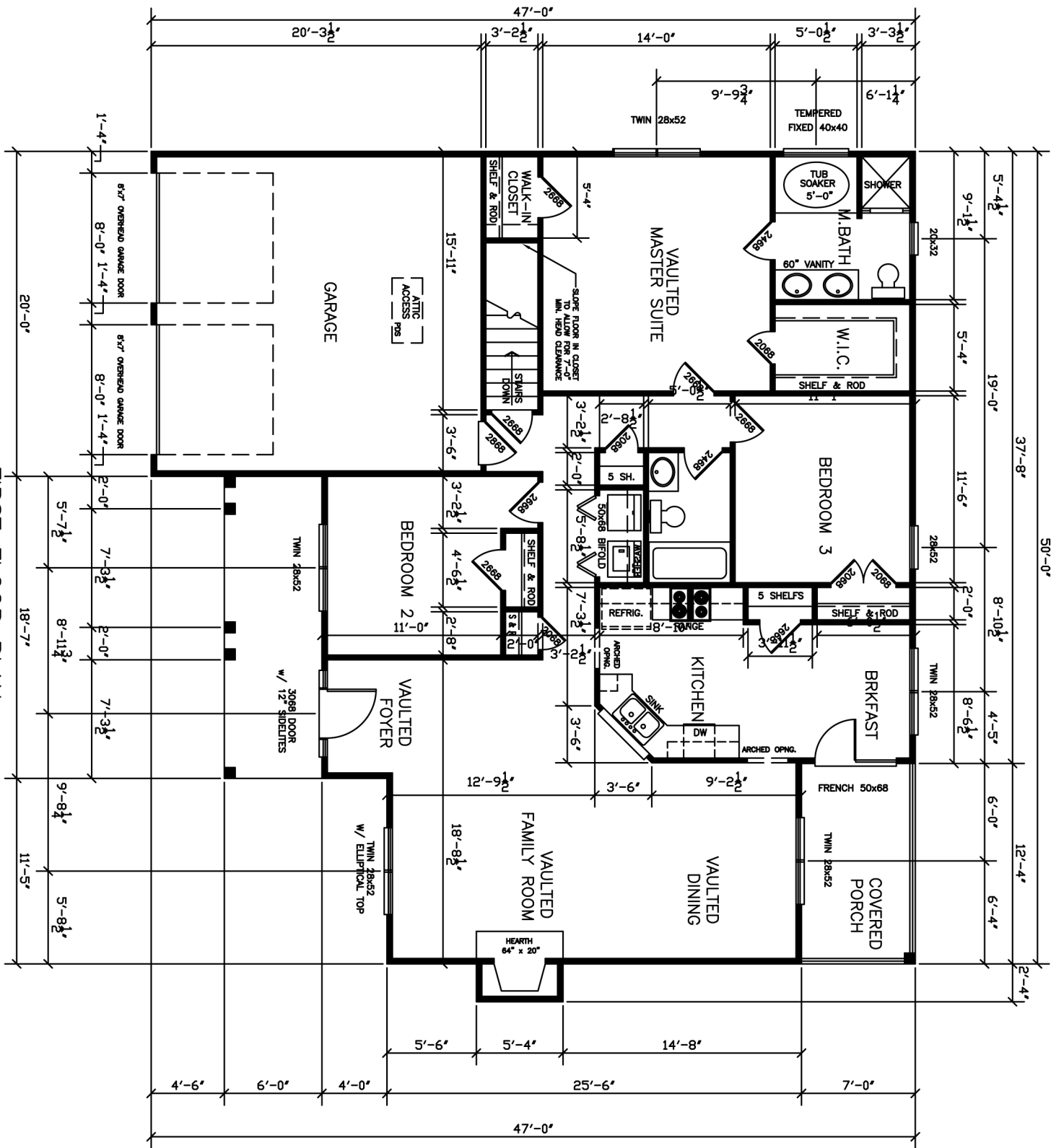


FIRST FLOOR PLAN



LIVING LEVEL NOTES:
 HEAT PUMP 200 AMP SERVICE
 INSULATION:
 ATTIC R-30
 EXT. WALL R-13
 BASEMENT CEILING R-19
 ATTIC VENTILATION WITH RIDGE VENTS AND PERFORATED SOFFIT VENT
 STAIRS
 TREADS 10 1/2"
 RISER 7 1/2"
 WIDTH 36"
 MAINTAIN HEAD CLEARANCE OF 6'-9"
 HOUSE HEIGHT:
 BASEMENT:
 FIRST FLOOR:
 SECOND FLOOR:

THE BARNWELL 1500SF
 CHAPEL WOODS - Lot 12

DESIGNED BY
 FRANK BETZ ASSOCIATES, INC.
 1800 LAKE PARK DRIVE/SUITE 101
 SMYRNA, GEORGIA 30080
 404/431-0888



www.virginiaridge.com



ARGABRIGHT
 CONTRACTORS, INC
 540-580-8138

DATE:
 03/01/05
 SHEET:
 A-1